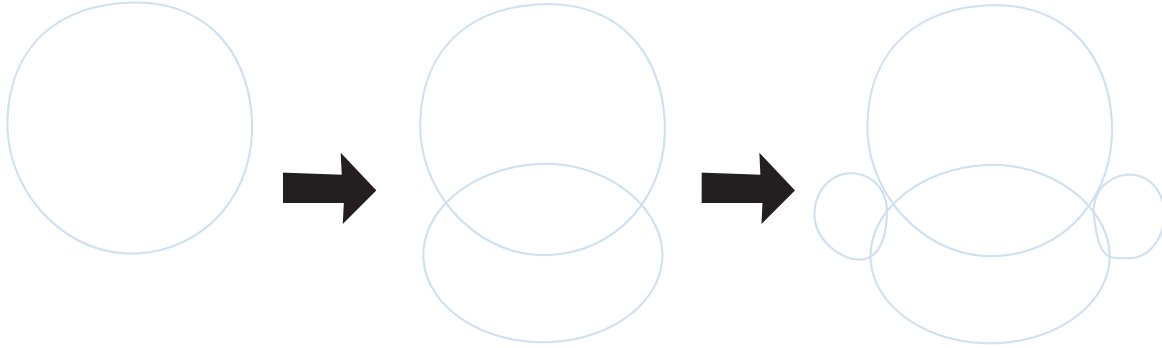


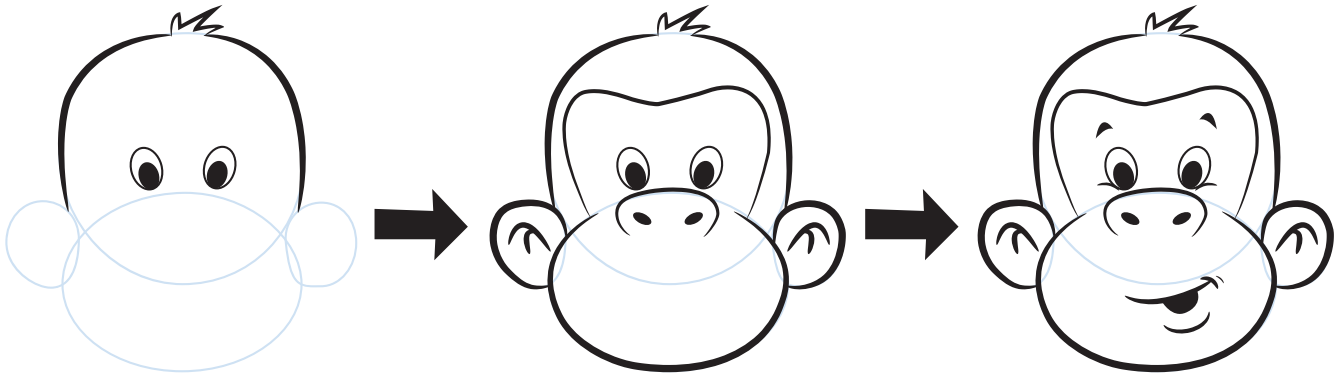
Steps to follow

When drawing each character in these lessons

1. When starting out, sketch a shape (or shapes) that will be the base for the character you are drawing. Sketch these base lines **very lightly**, because later you will erase them. These erasable lines will be represented as light blue lines throughout the book.



2. After lightly drawing the shapes that are the base for your character, you are now ready to draw the actual lines (over the sketched base lines) that will bring the character to life!



3. After drawing your final lines go ahead and erase the base lines you sketched in lightly to make the shapes. Now your character is completed! Add some color in, if you wish, and you'll add even more life to your character.

